



مشروع الطرق المؤدية إلى التعليم العالي

مركز تطوير الدراسات العليا والبحوث  
كلية الهندسة – جامعة القاهرة



جامعة القاهرة

# دراسات الجدوى الاقتصادية

د. خليل محمد خليل عطية

إعداد  
د. خليل محمد خليل عطية

القاهرة  
٢٠٠٨

(+ )

-

-

-

:

(+ )

:

[www.capsu.eng.cu.edu.eg](http://www.capsu.eng.cu.edu.eg) :

[www.Pathways.cu.edu.eg](http://www.Pathways.cu.edu.eg) :

[Pathways@Pathways.edu.eg](mailto:Pathways@Pathways.edu.eg) :

/

:

**ISBN 977-403-303-5 :**

www.alkottob.com



www.alkottob.com

[www.alkottob.com](http://www.alkottob.com)

www.alkottob.com

( - ) ( - )



[www.alkottob.com](http://www.alkottob.com)

www.alkottob.com

:

-  
-  
-  
-  
-  
-  
-  
-  
-

:

-  
-  
-  
-  
-

:

- مفهوم وأهمية دراسة الجدوى الفنية
- خطوات الدراسة الفنية
-

www.alkottob.com

( )  
( )

:

:

-----

www.alkottob.com

:( - )

:( - )

:( - )

:( - )

( - )

[www.alkottob.com](http://www.alkottob.com)

www.alkottob.com

[www.alkottob.com](http://www.alkottob.com)

( )

www.alkottob.com



[www.alkottob.com](http://www.alkottob.com)

www.alkottob.com

(Economically Justifiable

( )

Pre-feasibility "

" " "

Comprehensive Feasibility Study

Market Viability

( )

)  
)  
)  
)

Roadmap "

"  
Blueprint

www.alkottob.com

Pre-Feasibility Study

www.alkottob.com

Investment Promoter

www.alkottob.com

www.alkottob.com

www.alkottob.com



( ) (Ein Mann Gesellschaft )

www.alkottob.com

( )

www.alkottob.com

[www.alkottob.com](http://www.alkottob.com)

www.alkottob.com

( )

)

.(

( )

)

)

.(

)

(

www.alkottob.com

Holding Other Things

)

(Constant

www.alkottob.com

( )

( )

( )

)

(

Conspicuous Consumption

Inferior Goods

Price Taker

Price Maker

( )



www.alkottob.com

( )

( )

--

Emailed Investigation

( )

Statistical Sampling

Samples

www.alkottob.com

www.alkottob.com

www.alkottob.com

$$= / \times / = / ( ) \div / ( )$$

/ ÷ / ( ) = / ( ) ÷ / ( ) =

/ × / ( ) =

= ( )

. = × = × =

.

-

:

/ ( ) =

.

:

- ) + ( - ) + =

.(

+ ) = :

.(

:

=

:( - )

%

:

:

( - ) + =

) = ( - ) + =

(



$$= / = / =$$

$$, = ( ) = ( + ) =$$

$$, = ( ) , = ( ) =$$

$$, = ( , ) , =$$

$$, = ( ) , = ( ) =$$

www.alkottob.com

$$/ ( - ) \div / ( - ) =$$

$$, - = / \times / =$$

$$( ) / ( - ) \div / ( - ) = ,$$

)

(

(

)

:

+ =

( )

( )

( )

)

www.alkottob.com



+ -

( )

.(

.( )

( )

-

:( - )

:

:

www.alkottob.com

:

:

$$\frac{(\quad)(\quad) - \dots}{\dots}$$

$$\frac{\sqrt{[(\quad) - \dots] \times [(\quad) - \dots]}}{\dots} =$$

$$(\quad)$$

$$(\quad)$$

$$(\quad)$$

:

=  
=  
=  
=

$$, = \underline{\quad} = :$$

www.alkottob.com

, = \_\_\_ = :

:

( ) ( ) -

[ ( ) - ] × [ ( ) - ] √ =

× -

[ ( ) - ] × [ ( ) - ] √ =

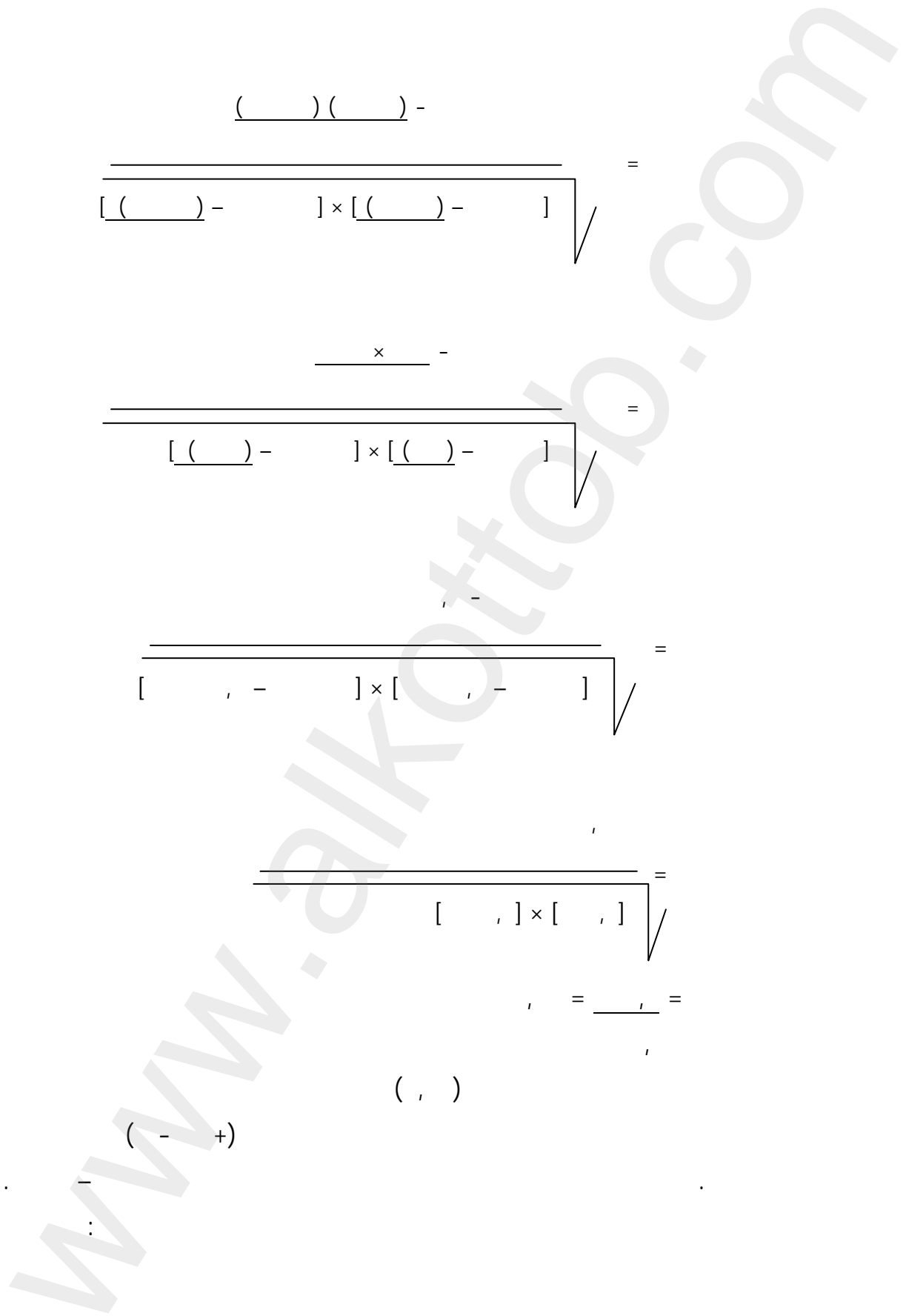
[ , - ] × [ , - ] √ =

[ , ] × [ , ] √ =

, = \_\_\_ =

( , )

( - +)



$$(-) \times \frac{(-)(-)-}{(-)(-)-} \sqrt{x} + - =$$

$$= (-)$$

$$= (-)$$

$$(-)$$

$$(-) \times \frac{(-)(-)-}{(-)(-)-} \sqrt{x} + =$$

$$(-) \times \sqrt{x} + =$$

$$(-) \times \sqrt{x} + =$$

$$[( - ) \times ] \times + =$$

$$, - , + , =$$

:

:

$$, - \times , + , =$$

$$() , = , - , + , = ( )$$

$$, - \times , + , =$$

$$() , = , - , + , = ( )$$

$$, - \times , + , =$$

$$() , = , - , + , = ( )$$

:

$$, - , + , =$$

$$() ( ) -$$

:

=

:

:

$$= ( )$$

$$\sqrt{\begin{matrix} - & + \\ - & \end{matrix}}$$

=

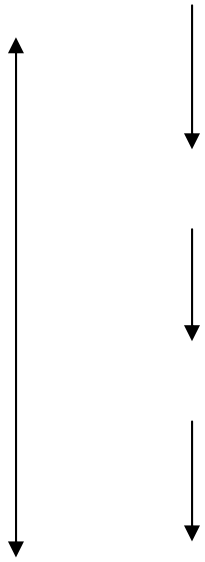
=

=

=

$$= \frac{\sum (x_i - \bar{x})(y_i - \bar{y})}{\sqrt{\sum (x_i - \bar{x})^2}}$$

**Regression Analysis**



(Projected Products

)

www.alkottob.com

www.alkottob.com



[www.alkottob.com](http://www.alkottob.com)

www.alkottob.com

)  
(

( )

www.alkottob.com

www.alkottob.com

:

:

.( )

)

.(

( )

-

•

-

/

-

-

-

( )

-

( )

www.alkottob.com

)

(

:

( / )

:

:

)

( )

www.alkottob.com

Maximum Capacity

)

(

Normal Capacity

( )

Break Even Analysis

( )

www.alkottob.com

Diseconomies

( )



Labor Intensive

Knowledge Intensive

Capital Intensive

( )

( )

( )

Process Chart

( )

www.alkottob.com

www.alkottob.com

**Opportunity Cost**

### Implicit Costs & Explicit Costs

www.alkottob.com

**Fixed Costs :** -

**Variable Costs :** -

**Total Costs :** -

**Average Costs :** -

**Average Total Costs :** -

**Average Fixed Costs :** -

Average Variable Costs : -

Marginal Costs : -

:( - )

( )	( )	( )	( )	( )	( )	( )	( )
-							
'	'	'	'				
'	'	'	'				
'	'	'	'				
'	'	'	'				
'	'	'	'				
'	'	'	'				
'	'	'	'				
'	'	'	'				
'	'	'	'				
'	'	'	'				
'	'	'	'				
'	'	'	'				
'	'	'	'				
'	'	'	'				

www.alkottob.com

www.alkottob.com

( )



(

)

(

)

% %

(

)

www.alkottob.com

www.alkottob.com

:( - )

x

+

+

=

=

+

=

=

x (

+

) =

=

x

=

=

+

=

+

=

:

=

-

( )

-

=

-

=

www.alkottob.com

[www.alkottob.com](http://www.alkottob.com)

www.alkottob.com

)  
(Preferred Stocks

Common Stocks

Retained Earnings

**Long Term Financing** -

---

**Short Term Financing**

-

.Bank Credit

Trade Credit

www.alkottob.com

-

- -

:

:

=

÷

:

] =

+ [

÷

:

:( - )

% = , = \_\_\_\_\_ = \_\_\_\_\_ =

+ \_\_\_\_\_ =

:( - )

: .%

% = , = , + \_\_\_\_\_ = + \_\_\_\_\_ =

:

:



www.alkottob.com

www.alkottob.com

--

$$\begin{aligned} & : \\ & : \\ & \div ( - ) = \\ & : \\ & = \\ & = \\ & = \end{aligned}$$

$$\begin{aligned} & : \\ & : ( + ) \div ( - ) = \\ & = \end{aligned}$$

--

( )

.

.

.

( - ) ÷ =

:

=

=

=

%

:

.% = (% × ) ÷ = (% - ) ÷ =

--

:

( + ) ÷ ( = ) + ( - ) ÷ ( = ) =

:

www.alkottob.com

$$\begin{aligned} & \left( \frac{\quad}{\quad} \right) \\ & \left( \frac{\quad}{\quad} \right) \\ & \left( \frac{\quad}{\quad} \right) \div \left( \frac{\quad}{\quad} \right) = \left( \frac{\quad}{\quad} \right) \\ & \% \left( \frac{\quad}{\quad} \right) \% \end{aligned}$$

www.alkottob.com

( )

:

)

:

)

(...

:

÷

=

x

.( )

:( - )

www.alkottob.com

(%)	( )	
---		

:

( ) %

( ) %

( ) %

	(%)	(%)		
, =% × ,		% , = × ÷		
, =% × ,		% , = × ÷		
, = × ,		% , = × ÷		
, = × ,		% , = × ÷		
, = × ,		, = × ÷		
%		%		

www.alkottob.com



:

( )

)

(...

...

www.alkottob.com

www.alkottob.com

( )  
+ ( )  
-  
x =  
=

) ÷ = (

www.alkottob.com

:( - )

Sunk Cost

www.alkottob.com

( )

:

)

.(

Depletion Rate

:

:

-

:

:

-

-

:( - )


.%

-

-

-

:

÷

=

=

÷

=

×

=

(

)

=

:


:

	%					
	%					
	%					
	%					
	%					

:

					-	
					-	
-	-	-	-	-		
					-	
					-	
					( )	

.

-

=

www.alkottob.com

( ) ( )

**Pay-Back Period** -

- -

-



---

$$\begin{aligned} & \div \quad \quad \quad \div \quad \quad \quad = \\ & : \quad \quad \quad + \quad \quad \quad = \\ & \div ( \quad \quad \quad + \quad \quad \quad ) = \end{aligned}$$

:( - )


		5

:

--

:

( )  
)

x

) +

÷ (

=

:

(

www.alkottob.com

---

**Average Rate of Return ( ) -**

$$\frac{\sum_{t=1}^n \frac{R_t}{(1+r)^t}}{n} = \frac{\sum_{t=1}^n R_t}{n} \cdot \frac{1}{\frac{1}{n} \sum_{t=1}^n \frac{1}{(1+r)^t}}$$

www.alkottob.com

Timing

**Net Present Value**

%

(% × ) + )

:

( + ) =

:

=

=

=

=

=

=

%

× = ( , + ) ×

, = , ×

( )

%

. = ( % × ) -

=

-

=

:

( + ) ÷ =

:

=

.(

)

=

.(

)

=

%

× = ( , + ) ÷ =

, = , × =

=

:

:

( )

- =

( + ) ÷ =



( ) ( + ) / + ... + ( + ) / + ( + ) / =

:

=

=

=

=

=

.

:

-

-

-

-

-

.

.

.

:( - )

:

-

%

-


: /

:  
: %  
- )  
- ۲  
:

%      %

		*	
( )	( )	,	
( )	( )	,	
		,	
		,	
		,	
		,	
		,	
		,	
		,	
		,	
		,	

%

\*

.  
:

:

%

( )	( )	,	
( )	( )	,	
		,	
		,	
		,	
		,	
		,	
		,	
		,	
( )			

: /

:

)

:( - )

(

		-
		-
	-	-
		-

.%

-

-

:

-

:

( )	( )		
		,	
		,	
		,	
		,	
		,	



( )	( )		
		,	
		,	
		,	
		,	
		,	
		,	

:

:( )

:( - )

-	-		
-	-		
-	-		
		-	
		-	
		-	
		-	

:

%

%

%

:

-)

,	%	%		
,	%	%		
,				

, = =

.%

-٢

( )	( )	,	
( )	( )	,	
( )	( )	,	
		,	
		,	
		,	
		,	
		,	

:

:( - )

%	%	
	-	
	-	

www.alkottob.com

( ) ( )

:( - )

:

( )	( )	
( )	( )	

: %

= ( )

= ( )

( )

( )

( )

( = - )

( = - )

--

:

( )

:

)

( )

( )

( )

(

**Profitability Index ( )**

( )

(

)

:

÷

=

÷

=

:

:( - )

-	-	-
	-	
	-	
	-	

.%

-	-				
		-	-	,	
		-	-	,	
				,	
		-	-	,	

\_\_\_\_\_ =

/ , = \_\_\_\_\_ =

: ( ) ( ) : ( - )

( )	( )	

.%

× = : ( )

.%

= , ×

/ , = \_\_\_\_\_ =

× = : ( )

.%

= , ×

/ , = \_\_\_\_\_ =

( )

( )

( )

()

,

()

.()

()

() ()

:( - )

( )	( )	

( )	( )	





× ) + =  
÷ (

:( - )

:( )

( )	( )	

:

( )			

:

%	%	%	%		
( )	( )	( )	( )	( )	
+	( )	( )	( )		

---

$$\begin{aligned} & : \qquad \qquad \qquad \% \quad \% \\ \% , = , + & = ( \div ) + = ( + ) \div ( \times ) + = \end{aligned}$$

www.alkottob.com

Uncertainty

**Sensitivity Analysis**

www.alkottob.com

( )

www.alkottob.com

( ) ( )

% ,

) ( ) ( )

% ,  
( - , × =

%

%

, +			
, -			
-			
+ %	%	%	

( )

Optimistic Values

Pessimistic Values

Auto Correlation

www.alkottob.com

### Break Even Analysis

( )

( )

:

=

:

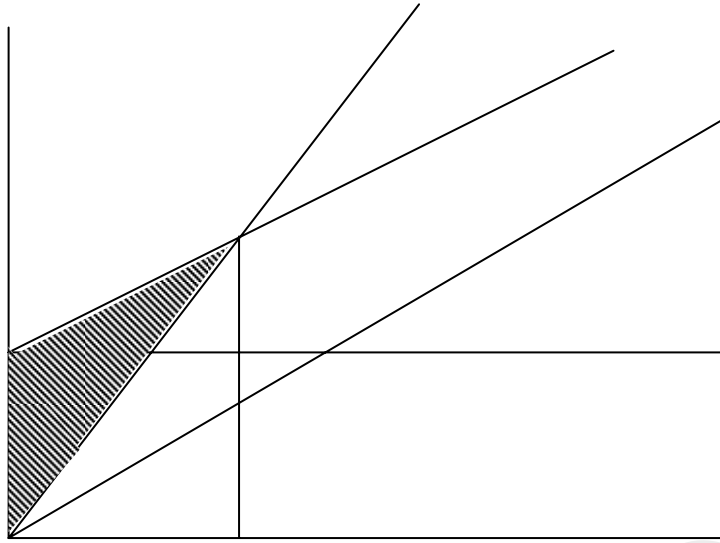
:

...



.  
 .  
 :  
 :  
 :  
 :  
 ( )  
 : ( )  
 . ( )  
 . ( )  
 ( )  
 ( )  
 ( )  
 ( )  
 ( )  
 ( )  
 . ( )  
 ( )  
 . ( )  
 ( )  
 . ( )  
 ( )  
 ( )





:( - )

( )

( )

( )

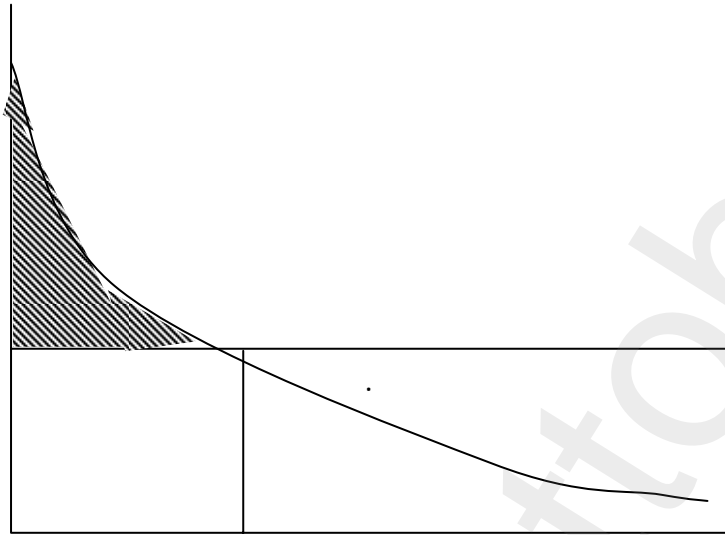
$$\frac{\quad \times \quad}{\quad} = \frac{(\quad)}{(\quad)} = (\quad)$$

$$= \underline{\quad} \times \underline{\quad} =$$

( )

( )

$$\underline{\quad} = (\quad)$$



( - )

:( - )

( )

( )

)

-

(

( )

)

(

.

:

$$\frac{\quad}{(\quad - \quad)} = \quad -$$
$$\frac{\quad}{\quad} = \quad -$$

x

$$\frac{\quad}{\quad} = \quad -$$

:

$$\frac{\quad + \quad}{(\quad - \quad)} = \quad -$$
$$\frac{\quad}{\quad} = \quad -$$
$$\frac{(\quad)}{\quad} = \quad -$$

www.alkottob.com

www.alkottob.com

$$\frac{\quad}{\quad} + \frac{\quad}{\quad} =$$

$$= \frac{\quad}{\quad} + \frac{\quad}{\quad} =$$

$$= \frac{\quad}{\quad} \times \frac{\quad}{\quad} =$$

$$:( - )$$

$$= \frac{\quad}{\quad} =$$

$$= \frac{\quad}{\quad} + \frac{\quad}{\quad} =$$

www.alkottob.com

[www.alkottob.com](http://www.alkottob.com)

www.alkottob.com

( - )

:( - )

-	-
-	-
-	-
-	-
-	-
-	-
-	-



( )

www.alkottob.com

www.alkottob.com



( )

·  
"

( )

Environment Market

www.alkottob.com

www.alkottob.com

.Internet

www.alkottob.com

:

.14

.10

%

( )

.16

www.alkottob.com

%

%

(Balance Sheet)

:

.17

"Profit and loss statement"

:"Income Statement"

/

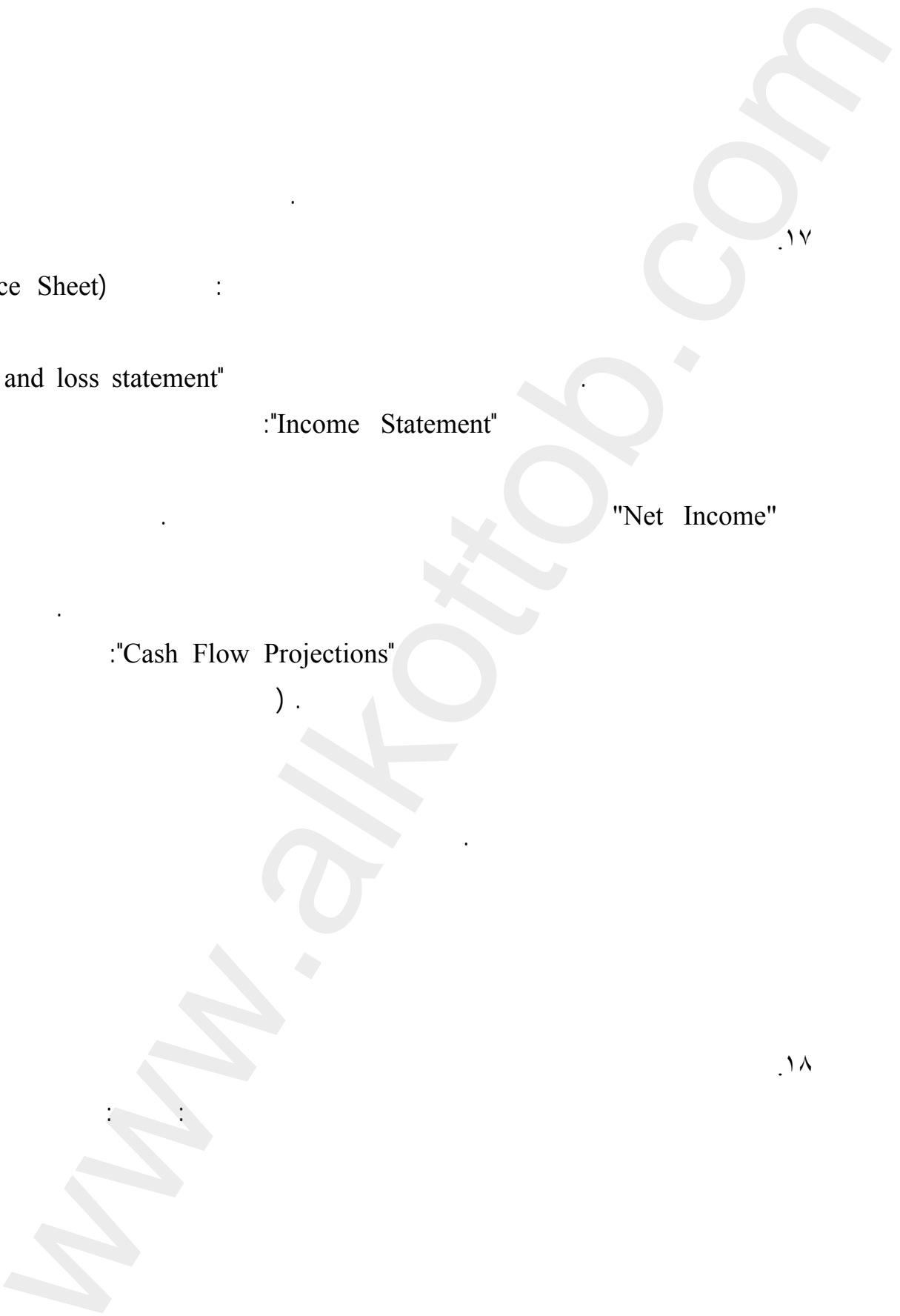
"Net Income"

:"Cash Flow Projections"

(

) .

.18





www.alkottob.com

.19

.20

.21

(Zero-base)

%

%

www.alkottob.com

.۲۲

.۲۳

.۲۴

www.alkottob.com

( )

:

.۲۵

)

:

(

.۲۶

.۲۷

.۲۸

.۲۹

www.alkottob.com

۳۰

۳۱

۳۲

)

(

Trial and Error

)

(

[www.alkottob.com](http://www.alkottob.com)

www.alkottob.com

:

1. Ashraf El-Sharkawy, Economic Feasibility Studies, Faculty of Engineering Cairo University, 2007.
2. Bierman, H.J. Schmidt, Seymour, The Capital Budgeting Decision , 5<sup>th</sup> ed. Macmillan Publishing Co. 1975.
3. Jem Schell, Small Business Answer Book, Solution to the 101 Most Common small Business problems, NY: John Willy & Sons, Inc. 1996.
4. Little, I.M.D. & Mirrlees, J.A. Project Appraisal and Planning for Developing Countries, Heinemann educational book Ltd. , London 1974.
5. Moore, P.C., Risk in Business decision, Longman group Ltd. London 1972.
6. Squire, I. & Van Dertak, Herman, Economic Analysis of projects, John Hopkins, Baltimore, 1975.
7. UNIDO, Guidelines for Project Evaluation, UN, N.Y., 1972.
8. UNIDO, Guide to Practical Project Appraisal, Social Benefit Cost Analysis in Developing Countries, United Nations, New York 1978.

# مشروع الطرق المؤدية إلى التعليم العالى

## الشركاء

- كلية الهندسة، جامعة القاهرة. - مؤسسة فورد.
- جامعات: القاهرة، وعين شمس، وأسيوط، وحلوان، والمنيا، وجنوب الوادى، والفيوم، وبنى سويف، وسوهاج.
- المجلس القومى للمرأة. - جمعية جيل المستقبل.

## الكتب الانجليزية

- 1- Planning and Controlling.
- 2- Systems and Creative Thinking.
- 3- Research Methods and Writing Research Proposals.
- 4- Statistical Data Analysis.
- 5- Teams and Work Groups.
- 6- Risk Assessment and Risk Management.
- 7- Communication Skills.
- 8- Negotiation Skills.
- 9- Analytical Thinking.
- 10- Problem Solving and Decision Making.
- 11- Stress Management.
- 12- Accounting for Management and Decision Making.
- 13- Basics of Managerial Economics.
- 14- Economic Feasibility Studies.
- 15- Health, Safety and Environment.
- 16- Wellness Guidelines: Healthful Life.
- 17- General Lectures Directory.

موقع المشروع على شبكة الإنترنت

[www.Pathways.cu.edu.eg](http://www.Pathways.cu.edu.eg)

## رسالة المشروع

رفع مهارات الطلاب والخريجين من الجامعات المختلفة لمساعدتهم على الاندماج السريع فى المجتمع وصقل مهاراتهم بما يتناسب مع حاجة البحث العلمى وسوق العمل.

## مطبوعات البرامج التدريبية الكتب العربية

- ١- المحاجة: طرق قياسها وأساليب تنميتها.
- ٢- القواعد اللغوية الأساسية للكتابة العلمية.
- ٣- دليل مشروعات التخرج من برنامج "تنمية مهارات البحث العلمى".
- ٤- التخطيط والرقابة.
- ٥- التفكير النمطى والإبداعى.
- ٦- مناهج البحث وكتابة المشروع المقترح للبحث.
- ٧- التحليل الإحصائى للبيانات.
- ٨- تكوين الفرق والعمل الجماعى.
- ٩- تقييم وإدارة المخاطر.
- ١٠- مهارات الاتصال.
- ١١- مهارات التفاوض.
- ١٢- التفكير التحليلى: القدرة والمهارة والأسلوب.
- ١٣- حل المشاكل وصنع القرار.
- ١٤- إدارة الضغوط.
- ١٥- المحاسبة للإدارة وصنع القرار.
- ١٦- أساسيات الاقتصاد الإدارى.
- ١٧- دراسات الجدوى الاقتصادية.
- ١٨- البيئة والتنمية المستدامة: الإطار المعرفى والتقييم المحاسبى.
- ١٩- إرشادات الصحة العامة: من أجل حياة صحية.
- ٢٠- المشروعات الصغيرة: الفرص والتحديات.
- ٢١- أضواء حول الموضوعات المعاصرة.

الناشر: مركز تطوير الدراسات العليا والبحوث - كلية الهندسة - جامعة القاهرة.

فاكس: ٣٥٧٠٣٦٢٠ (+٢٠٢)

ت: ٣٥٧١٦٦٢٠ (+٢٠٢)، ٣٥٦٧٨٢١٦ (+٢٠٢)

الموقع على شبكة الإنترنت: [www.capsu.eng.cu.edu.eg](http://www.capsu.eng.cu.edu.eg) بريد إلكترونى: [capsu@eng.cu.edu.eg](mailto:capsu@eng.cu.edu.eg)